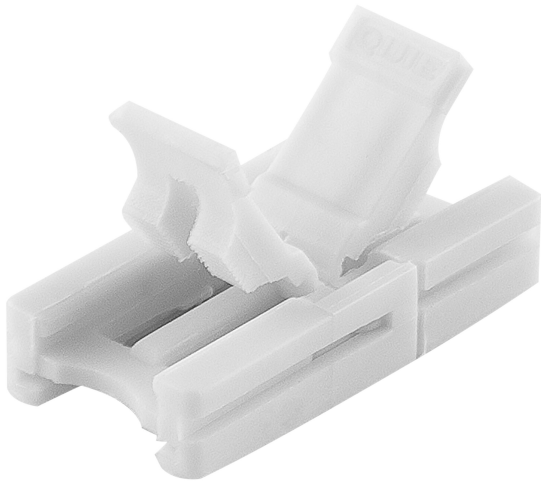


PRODUCT DATASHEET

LS AY PFM -CSD/P2

LED STRIP VALUE-600 PROTECTED | IP65 protected LED strips with 600 lm/m for general applications



Areas of application

- General indoor illumination

Product benefits

- Easy installation of connector, no manual wiring required
- Tool-free installation

TECHNICAL DATA

Electrical data

Nominal voltage	0...36 V
Nominal current	5000 mA

Dimensions & Weight

Length	20.6 mm
Width	11,0 mm
Height	4.5 mm
Product weight	1.5 g

Colors & materials

Product color	White
---------------	-------

Temperatures & operating conditions

Ambient temperature range	-15...+45 °C
Temperature range in operation	-15...+45 °C

Certificates & Standards

Type of protection	IP00
--------------------	------

LOGISTICAL DATA

Temperature range at storage	-35...+85 °C
------------------------------	--------------

DOWNLOAD DATA

DOWNLOAD DATA



Catalogs

LOGISTICAL DATA

Product code	Packaging unit (Pieces/Unit)	Dimensions (length x width x height)	Gross weight	Volume
4058075275393	BAG 2	80 mm x 120 mm x 5 mm	4.00 g	0.05 dm ³
4058075275409	Shipping box 100	120 mm x 100 mm x 120 mm	172.00 g	1.44 dm ³
4058075275416	Shipping box 1,000	525 mm x 140 mm x 270 mm	2111.00 g	19.85 dm ³

The mentioned product code describes the smallest quantity unit which can be ordered. One shipping unit can contain one or more single products. When placing an order, for the quantity please enter single or multiples of a shipping unit.

DISCLAIMER

Subject to change without notice. Errors and omission excepted. Always make sure to use the most recent release.