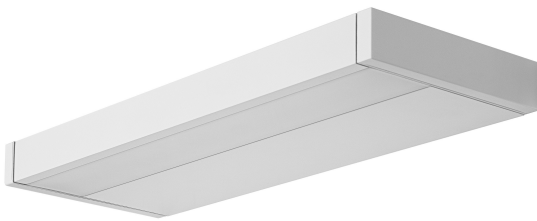


# PRODUCT DATASHEET

## LINEAR SHELF 400mm

LINEAR SHELF | Illuminated shelf for various application areas



---

### Areas of application

- Kitchens, workspaces
- Bathrooms (IP44)
- Living areas
- For indoor use only

---

### Product benefits

- Clean design, allows for an easy combination with various room styles
- Easy and quick installation
- Ideal combination of functionality and design

---

### Product features

- Color temperature: 4,000 K



---

**TECHNICAL DATA****Electrical data**

Nominal wattage	6.50 W
Nominal voltage	220...240 V
Mains frequency	50...60 Hz
Nominal current	31 mA
Inrush current	2 A
Max. no. of lum. on circuit break. B16 A	120
Max. no. of lum. on circuit break. C10 A	120
Max. no. of lum. on circuit break. C16 A	192
Power factor $\lambda$	> 0.5
Total harmonic distortion	< 70 %
Protection class	II
Operating mode	Mains voltage

**Photometrical data**

Luminous flux	700 lm
Luminous efficacy	91 lm/W
Color temperature	3000 K
Light color (designation)	Warm White
Color rendering index Ra	≥80
Standard deviation of color matching	≤6 sdcn
Photobiological safety group acc. to EN62778	RG1
Photobiological safety group acc. to EN62471	RG1
Beam angle	110 °

**Dimensions & Weight**

Length	400.00 mm
Width	130.00 mm
Height	30.00 mm
Product weight	760.00 g

## Materials & Colors

Product color	White
Housing color	White
Body material	Aluminum Plastic
Mercury content	0.0 mg

## Application & Mounting

Ambient temperature range	-20...+40 °C
Temperature range at storage	-20...+80 °C
Type of connection	Plug type C (EU)
Type of protection	IP44
Dimmable	No
Mounting type	Surface
Mounting location	Wall
LED module replaceable	Not replaceable

## Lifespan

Lifespan L70/B50 at 25 °C	30000 h
Number of switching cycles	100000



## Certificates & Standards

Standards	CE
-----------	----

## EQUIPMENT / ACCESSORIES

- Complete mounting and connecting accessories included

## DOWNLOAD DATA

DOWNLOAD DATA	
	User instruction LINEAR_SHELF
	Declarations of conformity EC_LINEARLED MAGNET_LINEAR SHELF

## LOGISTICAL DATA

Product code	Packaging unit (Pieces/Unit)	Dimensions (length x width x height)	Gross weight	Volume
4058075575738	Folding box 1	51 mm x 135 mm x 430 mm	921.00 g	2.96 dm <sup>3</sup>
4058075575745	Shipping box 8	425 mm x 420 mm x 160 mm	8121.00 g	28.56 dm <sup>3</sup>

The mentioned product code describes the smallest quantity unit which can be ordered. One shipping unit can contain one or more single products. When placing an order, for the quantity please enter single or multiples of a shipping unit.

---

## DISCLAIMER

Subject to change without notice. Errors and omission excepted. Always make sure to use the most recent release.