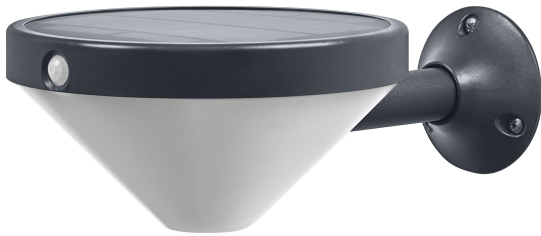


PRODUCT DATASHEET

ENDURA STYLE SOLAR LUNAR

Endura Style solar Lunar | Outdoor Endura Style Lunar Wall Sensor



Areas of application

- Outdoor use (IP44)
- Garages
- Building facades

Product benefits

- Easy and quick installation
- Demand based lighting and energy saving thanks to motion and daylight sensor
- High-quality materials

Product features

- Solar powered outdoor LED luminaire
- PIR motion detector and daylight sensor
- Color temperature: 3,000 K (Warm White)
- Battery charging via solar panel
- Adjustable luminaire head



TECHNICAL DATA

Electrical data

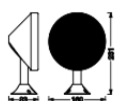
Nominal wattage	4.50 W
Nominal voltage	3,7 V
Nominal current	1160.000 mA
Protection class	III

Photometrical data

Luminous flux	300 lm
Total luminous flux of contained light sources	500 lm
Luminous efficacy	66 lm/W
Color temperature	3000 K
Light color (designation)	Warm White
Color rendering index Ra	≥80
Standard deviation of color matching	6 sdc _m
Flickering metric (Pst LM)	-
Stroboscope effect metric (SVM)	-
Photobiological safety group acc. to EN62778	RG0

Dimensions & Weight

Length	160.00 mm
Width	231.00 mm
Height	83.00 mm
Product weight	375.00 g



Materials & Colors

Product color	Black
Housing color	Black
Body material	Acrylonitrile butadiene styrene (ABS)
Glow Wire Test according to IEC 60695-2-12	650 °C

Mercury content	0.0 mg
-----------------	--------

Application & Mounting

Ambient temperature range	-20...+40 °C
Type of protection	IP44
Dimmable	No
Mounting type	Surface
Application environment	Outdoor
LED module replaceable	Not replaceable
With light source	Yes

Lifespan

Lifespan L70/B50 at 25 °C	25000 h
Number of switching cycles	12500

Sensor

Type of sensor	Motion / Daylight
Sensor detection angle	100 °
Sensor controlled switching time	30 s
Detection range of motion sensor	5...8 m
Detection threshold of daylight sensor	0...25 lx

Certificates & Standards

Standards	CE / UKCA
Luminaire with limited surface temperature, "D sign"	No
Ball shot safe	No

LOGISTICAL DATA

Product code	Packaging unit (Pieces/Unit)	Dimensions (length x width x height)	Gross weight	Volume
4058075766280	Folding box 1	170 mm x 170 mm x 95 mm	429.00 g	2.75 dm ³
4058075766297	Shipping box 4	360 mm x 190 mm x 220 mm	2196.00 g	15.05 dm ³

The mentioned product code describes the smallest quantity unit which can be ordered. One shipping unit can contain one or more single products. When placing an order, for the quantity please enter single or multiples of a shipping unit.

DISCLAIMER

Subject to change without notice. Errors and omission excepted. Always make sure to use the most recent release.

