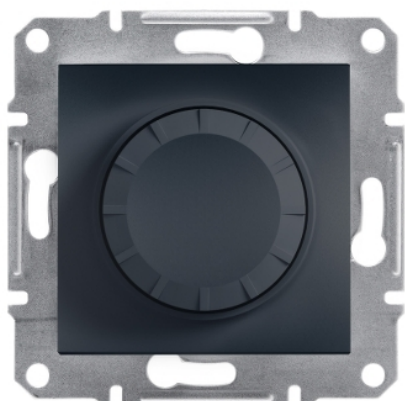


EPH6400171

Asfora - Rotary Dimmer/600RL/2-way (MTN5133-0000), wo frame, anthracite



Main

Range	Asfora
Product or component type	Dimmer
Device presentation	Mechanism with fixing frame
Load type	230 V AC halogen lamp: 40...600 W 230 V AC incandescent lamp: 40...600 W Low voltage halogen lamp with ferromagnetic transformer: 40...600 W
Colour tint	Anthracite
Type of packing	Box

Complementary

Device mounting	Flush
Switch function	1-pole 2-way
Dimmer control	Rotary push type
Dimmer application	Inductive load Ohmic load
Protection type	Fuse protection
Associated fuse rating	6.3 A
[Ue] rated operational voltage	230 V AC 50 Hz
Connections - terminals	Pillar terminals
Number of cables	2 cable(s) 2.5 mm ²
Cable stiffness	Rigid Flexible
Wire stripping length	8 mm
Material	ABS (acrylonitrile butadiene-styrene): central plate ABS (acrylonitrile butadiene-styrene): knob
Surface finish	Painted
Conductor material	Copper
Fixing mode	Claws53...78 mm
Height	71 mm
Width	71 mm
Depth	50 mm
Projecting depth	21 mm
Net weight	0.099 kg

Environment

Product certifications	TSE VDE UKR GOST NEMKO SEMKO FIMKO
Quality labels	CE NF
IP degree of protection	IP20

The information provided in this documentation contains general descriptions and/or technical characteristics of the performance of the products contained herein. This documentation is not intended as a substitute for and is not to be used for determining suitability or reliability of these products for specific user applications. It is the duty of any such user or integrator to perform the appropriate and complete risk analysis, evaluation and testing of the products with respect to the relevant specific application or use thereof. Neither Schneider Electric Industries SAS nor any of its affiliates or subsidiaries shall be responsible or liable for misuse of the information contained herein.

Packing Units

Unit Type of Package 1	PCE
Number of Units in Package 1	1
Package 1 Height	6.4 cm
Package 1 Width	8.5 cm
Package 1 Length	8.5 cm
Package 1 Weight	140 g
Unit Type of Package 2	S02
Number of Units in Package 2	24
Package 2 Height	15 cm
Package 2 Width	30 cm
Package 2 Length	40 cm
Package 2 Weight	3.738 kg
Unit Type of Package 3	P12
Number of Units in Package 3	1536
Package 3 Height	135 cm
Package 3 Width	80 cm
Package 3 Length	120 cm
Package 3 Weight	251.232 kg

Offer Sustainability

REACH Regulation	REACH Declaration
EU RoHS Directive	Compliant EU RoHS Declaration
Mercury free	Yes
RoHS exemption information	Yes
China RoHS Regulation	China RoHS Declaration
WEEE	The product must be disposed on European Union markets following specific waste collection and never end up in rubbish bins