

START Waterproof Slim - NEW
START Waterproof Slim 1500 IP65 3800lm 840
0046371

Product features

- **START Waterproof Slim** is a LED integrated polycarbonate housing luminaire with easy to access electrical terminal through bayonet lock end caps and tool-free electrical connection due to push-in terminal. Flexible installation as mounting brackets can be positioned freely on the luminaire. 28W; 3800lm; High efficiency with 136lm/W and 100,000 hours lifespan L70B50. SDCM < 5; IP65; IK08; Class I; 1488mm x 70mm x 69mm.



PRODUCT OVERVIEW

Product name	START Waterproof Slim 1500 IP65 3800lm 840
Technology	LED
Cap/Base	N/A
Housing	PC Polycarbonate
Mount	Ceiling surface mounting
General application	Logistics & Industry
ETIM Class	EC002892
E-number FI	4357077
Warranty	5 years
Fixture luminous flux (lm)	3800
Luminaire efficacy (lm/W)	136
Colour temperature (K)	4000
Light colour	Neutral White
CRI (Ra)	80
Colour Variation Initial (SDCM)	SDCM5
Beam Angle (°)	120
Photobiological Risk Group	RG0
Total power consumption (W)	28
Electrical protection	Class I
Control gear type	LED driver constant current
Dimmable	No
Housing colour	Grey
IP rating	IP65
IK rating	IK08
Product EAN number	5410288463711
Dimming method	N/A

DATA TABLE

General data	
Product name	START Waterproof Slim 1500 IP65 3800lm 840
Technology	LED
Cap/Base	N/A
Housing	PC Polycarbonate

START Waterproof Slim - NEW

START Waterproof Slim 1500 IP65 3800lm 840

0046371

Mount	Ceiling surface mounting
General application	Logistics & Industry
Operating temperature range (°C)	-25°C - 50°C
Performance ambient temperature Tq (°C)	25
ETIM Class	EC002892
E-number FI	4357077
Warranty	5 years

Optical data

Fixture luminous flux (lm)	3800
Luminaire efficacy (lm/W)	136
Colour temperature (K)	4000
Light colour	Neutral White
CRI (Ra)	80
Colour Variation Initial (SDCM)	SDCM5
Beam Angle (°)	120
Distribution type	Diffuse
Photobiological Risk Group	RG0

Electrical data

Total power consumption (W)	28
Mains voltage (V)	220-240V
Lamp power factor	1
THD (at 230 V, 50 Hz, full load, at 100% dimming level) xx.x %	20
Electrical protection	Class I
Control gear required	No
Control gear type	LED driver constant current
No. Of switching cycles before premature failures	>50000
Transformer required	No
Dimmable	No
Drive current (mA)	290
Inrush Current (A)	15
Inrush Duration (µs)	85
Glow Wire Test (°C)	850
Energy Efficiency Class (A->G) of contained light source	E
Nominal Frequency (Hz)	50/60Hz
Max. Luminaires per 10A C Breaker	31
Max. Luminaires per 13A C Breaker	40
Max. Luminaires per 16A C Breaker	48
Max. Luminaires per 20A C Breaker	60
Max. Luminaires per 10A B Breaker	21
Max. Luminaires per 13A B Breaker	27
Max. Luminaires per 16A B Breaker	32
Max. Luminaires per 20A B Breaker	40

Lifetime data

START Waterproof Slim - NEW

START Waterproof Slim 1500 IP65 3800lm 840

0046371

Lifespan L70 B50	100000
Lifespan L70 B20	100000
Lifespan L70 B10	100000
Lifespan L80 B50	90000
Lifespan L80 B20	80000
Lifespan L80 B10	70000
Lifespan L90 B50	38000
Lifespan L90 B20	36000
Lifespan L90 B10	34000

Physical data

Housing colour	Grey
IP rating	IP65
IK rating	IK08
Diffuser finish	Frosted
Diffuser material	PC Polycarbonate
Nominal Product Length (mm)	1488
Nominal Product Width (mm)	70
Nominal Product Height (mm)	69
Weight (kg)	1.24

Packaging

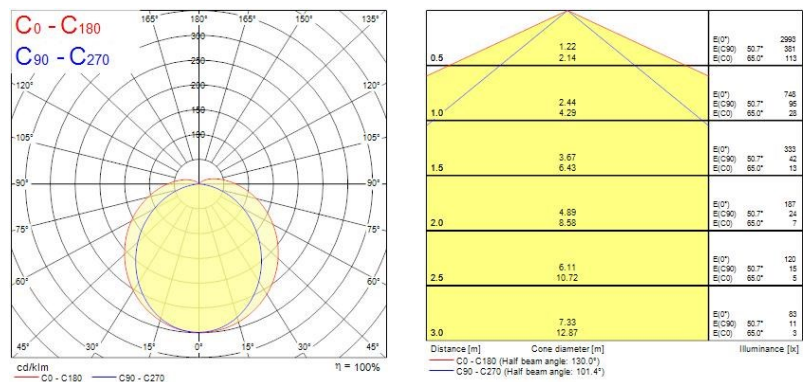
Single packaging type	Carton
Product EAN number	5410288463711
Packaging single length / height (cm)	151.8
Packaging single width (cm)	7.3
Packaging single depth (cm)	7.4
DUN14 (outer)	15410288463718
Units per outer package	9
Packaging outer length / height (cm)	153.3
Packaging outer width (cm)	23.6
Packaging outer depth (cm)	24.4

Safety data

Optimal operating condition (°C)	-25-50
----------------------------------	--------

PHOTOMETRY

START Waterproof Slim - NEW
START Waterproof Slim 1500 IP65 3800lm 840
0046371



TECHNICAL DRAWINGS

