



ENG

WEARABLEmini™

SL-WA10

Manual



Before using the light, read this manual thoroughly and keep it for future reference.

Design Pat. Pending
Copyright© 2018 CATEYE Co., Ltd.
SLWA10-180710 2



Light unit + Clip



Rubber band

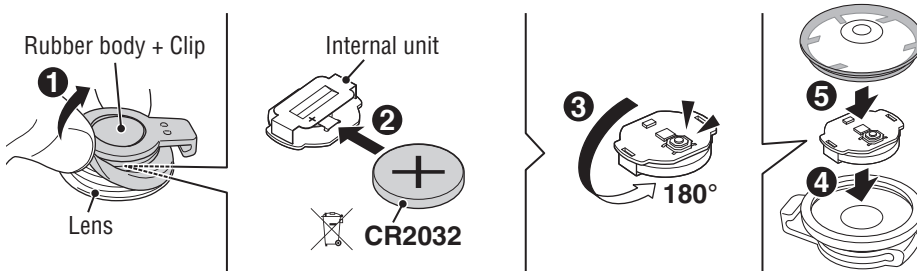


Hook



Lithium battery (CR2032)

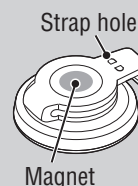
1 HOW TO INSTALL BATTERY



2 HOW TO MOUNT



When using the built-in magnet, be sure to attach to the object with strong magnetic force. Also ensure to use with the provided rubber band or clip, or a strap through the strap hole to avoid product dropping from the object. CATEYE shall not take responsibility or liability for any loss, breakage or accident caused by mounting the product with the built-in magnet.



! WARNING!!!

- This device uses magnets that may affect the operation of pacemakers. Never use this device if you use a pacemaker.
- Do not use a damaged rubber band.
- If a battery is swallowed accidentally, consult a doctor immediately.

! CAUTION!

- Stop your bicycle to operate the switch.
- Keep the light away from children.
- Risk of explosion if battery is replaced by an incorrect type. Dispose of used batteries according to local regulations.
- This product is water-resistant under normal daily use and can be used in the rain. However, do not intentionally submerge it in water.
- If the light unit or parts become dirty with mud, etc., clean with a soft cloth which is moistened with mild soap. Never apply paint thinner, benzine or alcohol; damage will result.



SPECIFICATIONS

Battery : Lithium battery (CR2032) x1
 Temperature range : 14 °F – 104 °F (-10 °C – 40 °C)
 Dimensions/weight : 1-17/32" x 1-19/64" x 43/64"
 (39 x 33 x 17mm) / 0.42 oz (12 g)
 (Including batteries)

*The specifications and design are subject to change without notice.

LIMITED WARRANTY

2-year Warranty: Light unit only

CatEye products are warranted to be free of defects from materials and workmanship for a period of 2 years from original purchase. If the product fails to work during normal use, CatEye will repair or replace the defect at no charge. Service must be performed by CatEye or an authorized retailer. To return the product, pack it carefully and enclose the warranty certificate (proof of purchase) with instruction for repair. Please write or type your name and address clearly on the warranty certificate. Insurance, handling and transportation charges to CatEye shall be borne by person desiring service.

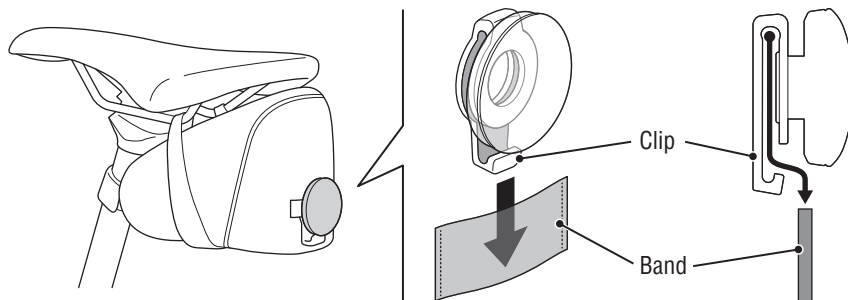
For UK and REPUBLIC OF IRELAND consumers, please return to the place of purchase. This does not affect your statutory rights.

CATEYE CO.,LTD.

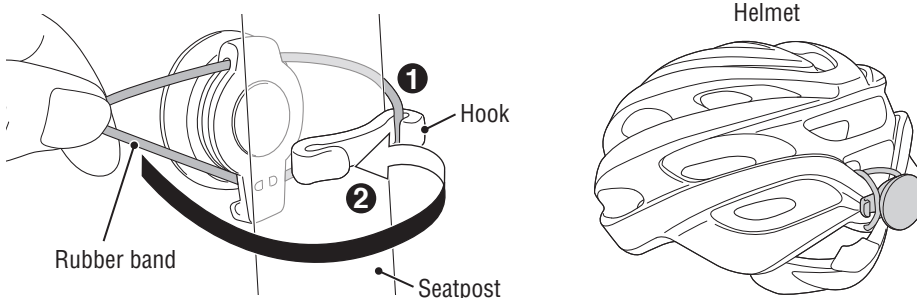
2-8-25, Kuwazu, Higashi
 Sumiyoshi-ku, Osaka 546-0041
 Japan
 Attn: CATEYE Customer Service
 Section
 Phone : (06)6719-6863
 Fax : (06)6719-6033
 E-mail : support@cateye.co.jp
 URL : http://www.cateye.com

[For US Customers]
 CATEYE AMERICA, INC.
 2825 Wilderness Place Suite
 1200, Boulder CO 80301-5494
 USA
 Phone : 303.443.4595
 Toll Free : 800.5.CATEYE
 Fax : 303.473.0006
 E-mail : service@cateye.com

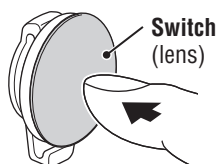
Attaching to a saddle bag, backpack or jersey pocket



Attaching to a bike or helmet



3 SWITCH OPERATION

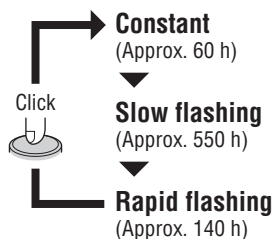


The ON/OFF and lighting modes are selected using a switch.

OFF ↔ ON *

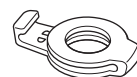


Press and hold



* When you turn the light on, it lights up in the last lighting mode you used. (Mode memory function)

SPARE/OPTIONAL PARTS



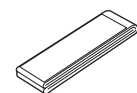
5442580
Clip



5442590
Rubber band



5442581
Hook



5442560
Attachment band



1665150
Lithium battery