



# HF-Matchbox Blue

## HF-M BLUE 124 SH TL/TL5/PL-L 230-240V

HF-Matchbox Blue is an affordable, reliable, compact, lightweight and high-frequency ballast for use with system wattages below 25 W in combination with TL mini, TL-D, TL5 and TL5c, PL-T/C, and PL-L/S lamps. The HF-M Blue range has a robust design, meets all relevant international safety and performance standards and has an energy efficiency index (CELMA EEI) of A2. The ballast is primarily designed for indoor application. For outdoor application, the luminaire should be minimum Class II need to be sufficiently protected against water & dust. The installation should also be guard against any lightning surge or any other necessary electrical protection as deemed in such typical installation & application.

### Product data

General Information	
Application Code	mk1
Lamp Type	TL/TL5/PL-L
Number of Lamps	1 piece/unit
Number of Products on MCB (16A Type B) (Nom)	60
Automatic Restart	Yes
Operating and Electrical	
Input Voltage	230 to 240 V
Input Frequency	50 to 60 Hz
Power Factor 100% Load (Nom)	0.64
Ignition Time (Max)	0.5 s
Mains Voltage Performance (AC)	-8%+6%
Mains Voltage Safety (AC)	-10%+10%
Power Losses (Nom)	1.9-2.2 W

Wiring	
Connector Type Input Terminals	Insert
Color Input Terminals	Orange
Color Output Terminals	Grey
Connector Type Output Terminals	Insert
Cable Length From Device to Lamp	1.50 m
Cable Length Hot Wiring	0.30 m
Wire Striplength	8.0-9.0 mm
Input Terminal Cross Section	0.50-1.50 mm <sup>2</sup>
Output Terminal Cross Section	0.50-1.50 mm <sup>2</sup>

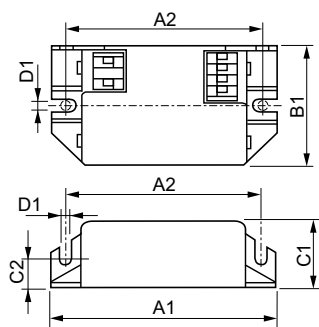
System characteristics	
Rated Ballast-Lamp Power	24 W
Temperature	
T-Ambient (Max)	40 °C
T-Ambient (Min)	-10 °C

## HF-Matchbox Blue

T-Case Maximum (Max)	75 °C
<b>Mechanical and Housing</b>	
Housing	SH
<b>Emergency Operation</b>	
Battery Voltage Lamp Ignition	194-254 V
<b>Approval and Application</b>	
IP Classification	IP 20 [ Ingress Protection 20]
Approval Marks	F-Marking CE marking VDE certificate CB Certificate

<b>Product Data</b>	
Full product code	871150053638930
Order product name	HF-M BLUE 124 SH TL/TL5/PL-L 230-240V
EAN/UPC - Product	8711500536389
Order code	913700417966
Numerator - Quantity Per Pack	1
Numerator - Packs per outer box	50
Material Nr. (12NC)	913700417966
Net Weight (Piece)	0.040 kg

### Dimensional drawing



Product	A1	A2	B1	C1	D1
HF-M BLUE 124 SH TL/TL5/PL-L 230-240V	94 mm	84 mm	40 mm	22 mm	4.4 mm

HF-M BLUE 124 SH TL/TL5/PL-L 230-240V

