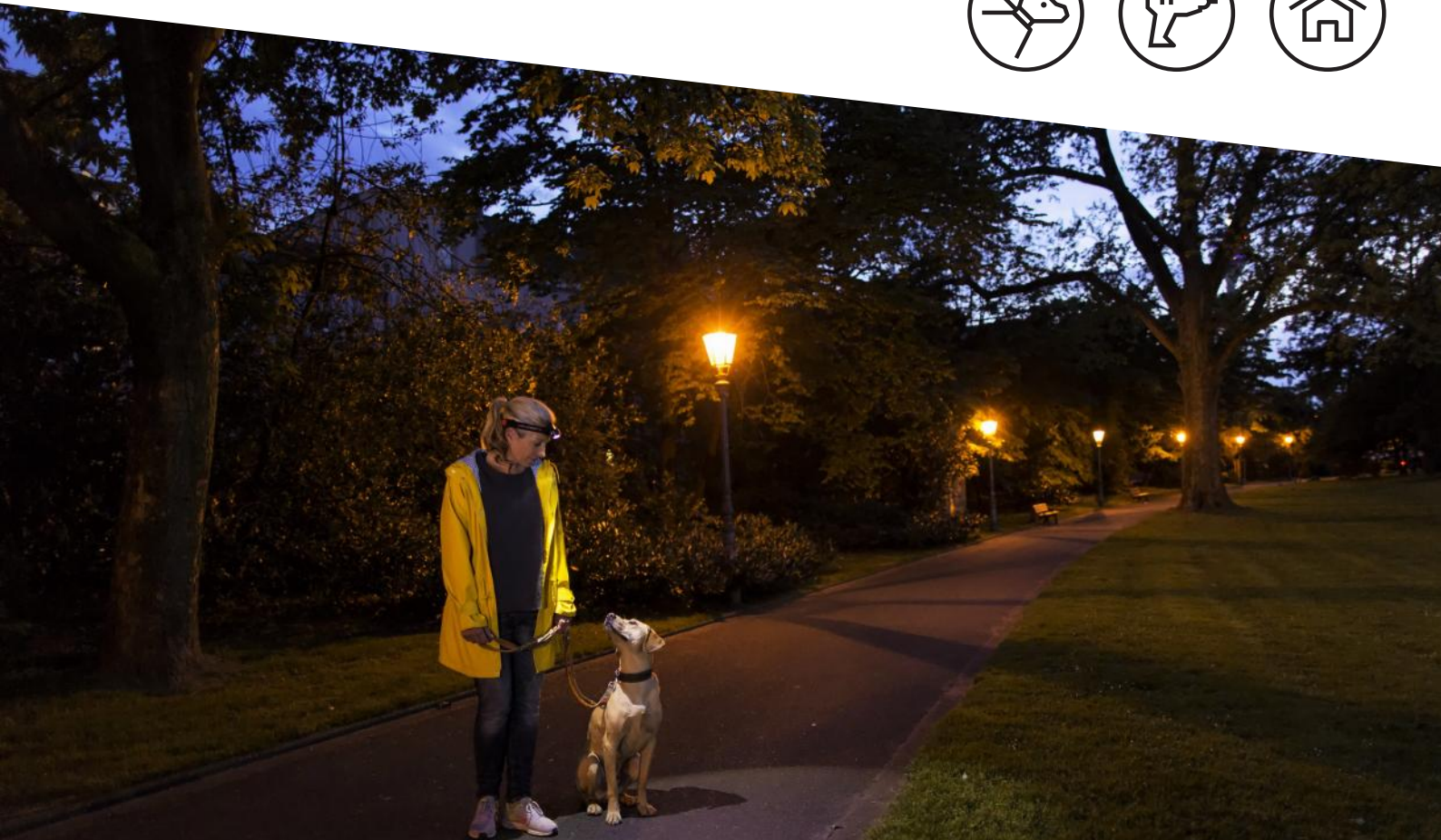
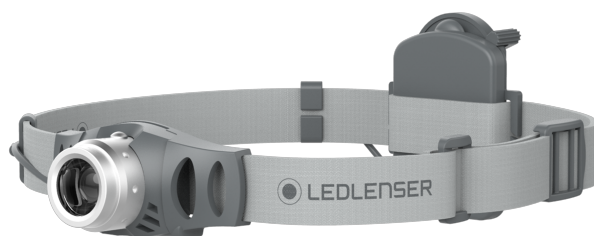




— PRODUCT DATA SHEET

SH-Pro100



SH-Pro100

PRODUCT DESCRIPTION

With the Ledlenser SH-Pro100, you always have your hands free but you still get optimal lighting. Our all-round performer among our LED headlamps is as robust as it is versatile: the premium polycarbonate housing can withstand both rain and impact. The elastic headband is easy to wash when dirty and the ultra-strength LEDs can be freely adjusted and even dimmed. With an optimal weight distribution, high comfort for the wearer and easy operation, the SH-Pro100 is a top design for anyone who places equal value on both quality and price.

- For smart customers: a powerful all-round performer at a low price
- Premium housing ensures lasting durability
- Optimal use in all lighting conditions thanks to adjustable LED
- Powerful companion providing 100 lumens¹ of light
- Elastic headband is comfortable and easy to wash
- Ledlenser's well-known LED quality guarantees a beam distance of up to 80 meters¹

TECHNICAL DATA

Head diameter [mm]	28
Weight incl. batteries [g]	130
Weight without batteries [g]	97
Focus function	No
Head material	Aluminum alloy
Tube material	PC
Optic	Plastic lense (PMMA)
Headband material	Elastic fabric
Headband type	Side headband
Head movement type	Stepped movement
Head movement angle [°]	75
Headband specifications	Detachable, Elastic, Rubberised back, Washable

POWER SUPPLY

Power source type	Battery
Battery quantity	3
Battery type	Alkaline
Battery description	Micro (AAA) 1.5V
Rechargeable	No
Energy modes	Energy Saving
Usable batteries	AAA NiMH 1.2V

FURTHER SPECIFICATIONS

IP class	IPX4
Drop test (drop height) [m]	1
Working temperature range [°C]	-20 to +40

LIGHT FUNCTIONS

Power, Low Power

LIGHT SOURCE

Amount LEDs	1
LED type	Power LED
Color	White
Color temperature [K]	6000 to 8000
Color rendering index (CRI)	75

LEDLENSER VALUES

Energy Saving	Boost	Power	Mid Power	Low Power
Light output ¹ [lm]		100		5
Beam distance ¹ [m]		80		20
Run time ¹ [h]		8		60

SWITCH

Front Switch

FEATURES

Dimmable

SH-Pro100

PACKAGING AND LOGISTICS



PACKAGING INFORMATION

Type of packaging	Test It Blister
Scope of delivery	1 set of batteries
Item No.	501069
Customs tariff number	85131000
Color	gray
MSRP price (€)	19.90

SINGLE PACKAGE

Dimensions W x H x D [cm]	11.2 x 20.5 x 8.2
Gross weight [g]	216
GTIN-13	4058205008983

INNER CARTON

Unit	6
Dimensions W x D x H [cm]	51 x 21.3 x 12.5
Gross weight [g]	1750
GTIN-13	4058205008990

EXPORT CARTON

Unit	24
Dimensions W x D x H [cm]	53 x 45 x 28
Gross weight [kg]	9
GTIN-13	4058205009003

SH-Pro 100

ACCESORIES

PRODUCT CATEGORY	ITEM NUMBER	PRODUCT NAME	MSRP
Battery	500981	4x AAA Alkaline Ionic	3.49 €

SH-Pro 100

PRODUCT SERIES

The Ledlenser Solidline-Series

High quality, low prices.

Solidline products are specifically designed for frugal flashlight and headlamp aficionados looking for compact basic equipment with sophisticated features without compromising quality. This closes the gap between our premium product target group, filling a very promising, new price segment.

FOOTNOTES

The information pertaining to scope of delivery, appearance, performance, dimensions and weight corresponds to the information available at the time of publication. In the interest of product development, we reserve the right to change scope of delivery, appearance, design and color without prior notice. Product images may vary from the actual products and may show optional accessories which can be purchased separately. Errors and omissions excepted.

1) Luminous flux (lumen/lm) or maximum beam distance (in meters/m) is measured using the setting specified in the table or text when switching on with a set of fresh alkaline batteries. If no brightness level is named specifically, the values refer to the brightest possible setting. These are average values that may deviate by +/-15 % in individual instances in accordance with chip and battery. The average lighting duration (hours/h), measured in the relevant setting as given in the table or text, down to a luminous flux of 1 lumen. If no brightness level is named specifically, the values refer to the Low Power function, or if not present, to the lowest possible setting.